

Occhio



a new culture of light

a new
culture
of light



**Everything changes.
The only things that last are
the things that evolve.
This new thinking needs space.
And light that inspires.**

Foreword

Axel Meise

Dear readers,

Artificial light is a remarkable cultural achievement: From campfires, to gas lamps, to coiled filament, up to the LED – an evolutionary and, at times, truly revolutionary development.

Who would have thought even a few short years ago that we would be able to control light intuitively with an app or gestures? That we would be able to change the color of light at any time or freely direct it upward or downward? That luminaires and spotlights would be able to take on entirely new forms? That energy consumption could ever be so low in relation to the luminous intensity? Or that LED light would approach the quality of sunlight?

Creating a new culture of light – that's the grand idea that drives us at Occhio. Firstly, it comes down to the successful interplay between space, architecture and perception. But more than that it's about putting the focus on people, helping them become the lighting designers of their personal space and ultimately enhancing their quality of life.

Our comprehensive, highly innovative product portfolio is constantly growing and adding solutions for private and public projects – with it, we are putting the unique potential of Occhio in your hands.

A picture is worth a thousand words. Through the selected projects in this Case Book, we invite you to experience the power of the new culture of light from Occhio in various areas of life.

Be inspired!

Axel Meise
Founder, designer and CEO





One concept, individual solutions – rooms for bright people

GabrielenLofts Munich
10 – 39



Innovative architecture, biodynamic light – a visionary project

BORA Niederndorf
40 – 53



A spectacular display of virtuoso lighting moods

Alter Hof Munich
54 – 67



Nordic clarity and hospitality

Hotel Misan Norderney
68 – 77

The lighthouse

Design Offices Munich
78 – 87



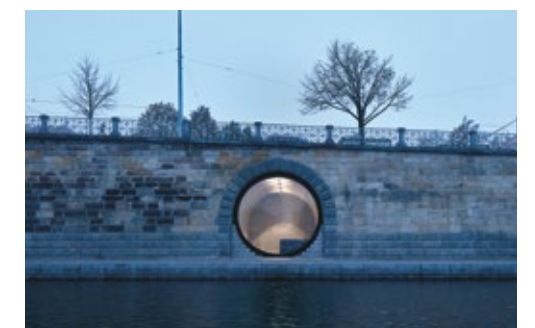
Intelligent light control for a smart office

Novalink Frauenfeld
88 – 95



New luster in golden Prague

Vltava riverside, Prague
96 – 97



we create a new culture of light

About Occhio
98 – 119





One concept,
individual solutions –
rooms for
bright people

GabrielLofts Munich (DE)



»Light does not simply
come down to a choice
between bright and dark.«

»People should feel at home in the rooms I design for them.«

An interview with Uwe Binnberg,
project developer of the Gabrielenlofts

Mr. Binnberg, at what point do you start thinking about light when you design a room?

Uwe Binnberg That starts quite early in the process. My rooms and working spaces have to be functional as well as being welcoming spaces. This is why we have to take care of all of the technical requirements while a building is still just a shell. Different light systems can be used, depending on the wishes of tenants and customers. Finding individual solutions is frequently critical, particularly when you are talking about light.

Why?

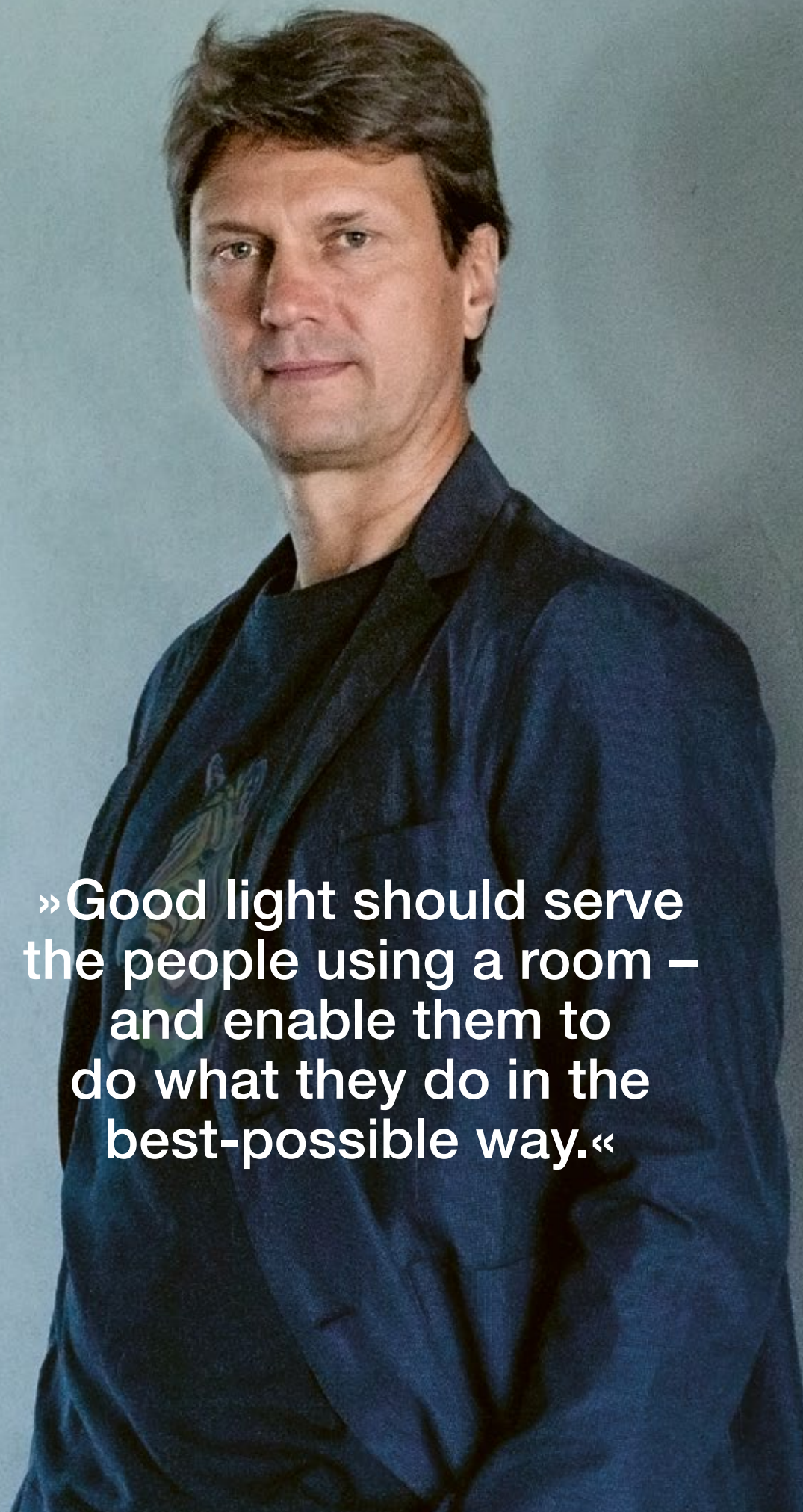
Uwe Binnberg As we know, people experience light in different ways: what may be too bright to one person, will be too dark to another. It's the same with light color: warm light for the evening, cooler light for the day, that goes without saying. But how we experience this differs from person to person, too. This is why it makes sense to have individual lighting at each workstation to complement the general lighting used in a room. As I said earlier: people should feel at home in the rooms I design for them.

What do you expect from luminaires?

Uwe Binnberg When it comes to luminaires, I'm just as straightforward as I am demanding: their design and function have to meet my requirements. I love the many different features that Occhio offers. Light is more than just a choice between bright and dark – by changing the light color to be cooler or warmer, always oriented toward natural light.

One of my wishes for future projects would be for luminaires that automatically change their light color as the day progresses. After all, people get caught up in what they are doing at work and forget to adjust the light. But I have also heard that Occhio already has a few of such solutions that have made this dream come true. I'll talk to Axel Meise about it the next time I see him ... (laughs)



A portrait of Bernd Sacher, a middle-aged man with dark hair, wearing a dark blue jacket over a dark shirt. He is looking slightly to the right of the camera with a neutral expression. The background is a plain, light-colored wall.

»Good light should serve
the people using a room –
and enable them to
do what they do in the
best-possible way.«

»I think about the right lighting before every presentation.«

An interview with Bernd Sacher,
develops building solutions in the Gabrielenlofts
with Sacher Ingenieure

What does light mean to you, Mr. Sacher?

Bernd Sacher Light is a fundamental part of our lives – particularly our work lives. The light we have in an office affects how we feel, just like the acoustics and room temperature.

How would you describe the essence of lighting design?

Bernd Sacher I think good light has two jobs. First, it has to illuminate the room. Second, it has to set the stage for the people in the room. Basically, it needs to enable them to do what they do in the best-possible way. They must be able to do their jobs without feeling tired or being blinded or distracted.

How is that achieved?

Bernd Sacher I think very carefully about the lighting level I want before every meeting and presentation. The decision depends on whether it will be a presentation, online meeting or a personal discussion. We spend most of our daily lives in offices. For this reason, I would generally like to have light play a bigger role in planning than it has thus far. I think that we planners should add more atmospheric accents to employee workstations, break rooms, conference rooms and reception areas to create a pleasant lighting mood.



A warm reception.



That wonderful feeling of being welcome. Is this feeling created by the material used in the furniture or by the soft light? Ultimately, it all comes down to how all the elements work together harmoniously.





Facts

and figures



Floor plan, Scale 1:400

Ground floor

1 Reception area

- Mito sospeso 60
- Mito sospeso 40
- ◇ Sento verticale
- ◇ Più alto 3d track
- ◇ lui piano

2 Executive office

- Mito sospeso 40
- Mito volo 140
- ◇ Sento terra

3 Workstations

- Mito volo 140
- ◇ Più alto 3d track

4-9 Conference rooms

- Mito sospeso 60
- ◇ Sento terra
- ◇ Più alto 3d track
- ◇ lui alto

10 Kitchen

- ◇ Più alto 3d track

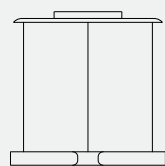
11-12 Staircases

- Mito sospeso 60
- ◇ lui piano

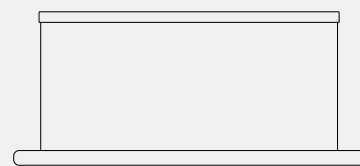
Light control system



Ground floor



Mito sospeso 60



Mito volo 140



Più alto 3d track



The raw rows of concrete that run across the exposed ceiling lend an industrial feel to the Gabrielenlofts while the paneled walls serve as vertical façades that reflect the light. The Più alto 3d spotlights can be oriented freely. With their configurable lens optics they provide a soft, pleasant background light. Thanks to VOLT technology, the adapter disappears completely into the track.

Watch our film about the project at
www.occhio.com/gabrielenlofts



A tricky problem. A tailored lighting solution.



Light is considered at a very early stage in the office of Sacher Ingenieure.
The project team devises the ideal concept step by step – for room and light.

The building has been successfully brought back to life, but some challenging conditions have arisen for the lighting designers. What to do? Occhio joined forces with the lighting designers of Lumen³ and came up with the perfect solutions.

The goal of the remodeling project of Gabrielenlofts in Munich was clear: to convert the worn-out factory building into state-of-the-art offices to which Occhio would add new splendor with its luminaires. But the job proved to be quite a challenge.

During their deconstruction work, crews exposed a ribbed ceiling in the building and created some very difficult lighting conditions in the process. All luminaires also had to hang at the same height to create uniform light. Occhio came up with the perfect light solutions based on specifications for workplace lighting set by DIN, the national standards body for Germany, and an expertise by Lumen³.

The job of creating the ideal luminaires for this unusual setting required Occhio to pay very careful attention to the details. One of these details was the observance of the prescribed unified glare rating (UGR). The pro-

perties of the room itself play a key role in this rating as well. In office rooms, this rating should not exceed UGR 19 in order to facilitate glare-free work at workstations equipped with computer monitors.

The Mito linear luminaire series turned out to be the light of choice for this tricky job. Mito volo, the suspended luminaire in this series, is completely glare-free, can provide both direct and indirect lighting and offers optimal color rendering. The luminaire can be integrated into the pre-existing building lighting control system and can be synchronously managed to provide the best uniform light for workstations.

The room concept was then fine-tuned in cooperation with Lumen³, a step in which special profiles were even produced for the ribbed ceiling. Occhio specialists came up with a way to hang the luminaires using external bolts that's unique to this project. It was an exciting process for everyone involved: a unique product settled, step by step, into its new surroundings.

The results speak for themselves – the calm of the design, the elegance and the simplicity of the luminaires that contrast so sharply with the rawness exuded by the ceiling.

»Our rooms are an expression of our culture, our identity.«

An interview with Peter Martin,
advises the clients of his agency Martin et Karczinski
in the Gabrielenlofts

**Mr. Martin, what does the word »room«
mean to you as a designer?**

Peter Martin You can certainly say something quickly, but it would take longer to build. For this reason, I consider every room to be a constructed, materialized and long-term message. I think that the way that we want to work in the future depends primarily on the room in which we work. This room must be designed in such a way that, in terms of its atmosphere and quality, the processes that take place there have already been considered or, better still, anticipated!

**How do you anticipate a room that
has not even been built yet?**

Peter Martin (laughs) Great question! I try to assume different perspectives and anticipate all dimensions in the design. One thing is clear: you can certainly anticipate many things, but you cannot do all of them justice. At the end of the day, every room is always just an approximation of your ideal place. This is the compromise that you ultimately have to make. But I am happy to make it.

**What sort of fundamental principles
are you applying right now?**

Peter Martin We want to lend our identity to the room, but we do not want to overwhelm the identity of the room, and certainly not to destroy it. We try to identify the essentials, analyze them and then consider how we can optimally support them.

**What will the design-related requirements for
working atmosphere be in the future?**

Peter Martin The old office world is too clean and strict. Today, people want to be able to concentrate on their work, but the organization itself should resemble a small family. You want to be able to withdraw and work by yourself, but still be part of a community. I personally am happy when people feel at home. This is usually the basic requirement for good work. We want to create a new welcoming environment in the corporate world. It should be more free, open and inviting – this is the goal we are setting in the world.

**What role does light play as you
implement your vision?**

Peter Martin Having the right light at the right moment is absolutely essential. A couple will light a candle when they want to spend a romantic evening together. This makes it obvious: this will not be a business meeting. By contrast, we need to be able to see things clearly at work. This is why we need clear and bright light. Light must be able to react differently to various formats and situations.

**Do you think there is such
a thing as perfect light?**

Peter Martin The perfect light reflects the cycle of nature – it is stimulating in the morning, brilliant at midday and soothing, warm and soft in the evening. A sunset is a very special moment that you only really get in nature. The light becomes warmer and finer. It casts a different shadow. The natural softness fosters the moment in which day turns into evening – the moment of warmth and comfort. You can see what I mean if you look at our rooms on these pages: we have created an environment in which people who trust one another can escape and have candid conversations.

»Feeling at home is usually the basic requirement for good work. We want to create a new welcoming environment in the corporate world.«





Conference rooms are also living spaces – after all, employees spend much of their time in offices. This conference room in the Gabrielenlofts is certainly a place for good discussions. Clarity and reduced design complement the warmth and feel of forms and materials. Who's up for another round of brainstorming?

The calm before the idea.



The personal offices of Peter Martin, the CEO of Martin et Karczinski.
In what sort of atmosphere can you think most clearly? When you can relax and let go.
When you are at one with your surroundings, a place that inspires you by treating
the senses. And when the light envelops you.





Facts

and figures

Floor plan, Scale 1:350

Second floor

1 Reception area – office

- io tavolo
- lui basso

2 Hallway

- lui basso

3 Kitchen

- Sento terra

4–8 Conference rooms

- Mito volo 100
- io tavolo

9 Outdoor area

- Sito palo
- Sito basso

10 Reception area – academy

- Mito sospeso 60
- lui alto

11–14 Conference rooms

- Sento terra
- lui alto

15 Kitchen

- io pico
- lui volto

Fifth floor

1 Reception area – executive office

- lui piano pure

2–5 Restrooms

- lui piano pure

6 Kitchen

- lui piano pure

7 Meet & dine area

- lui piano pure

8 Lounge area

- Mito largo
- lui piano pure

9 Executive office

- Mito raggio
- lui piano pure

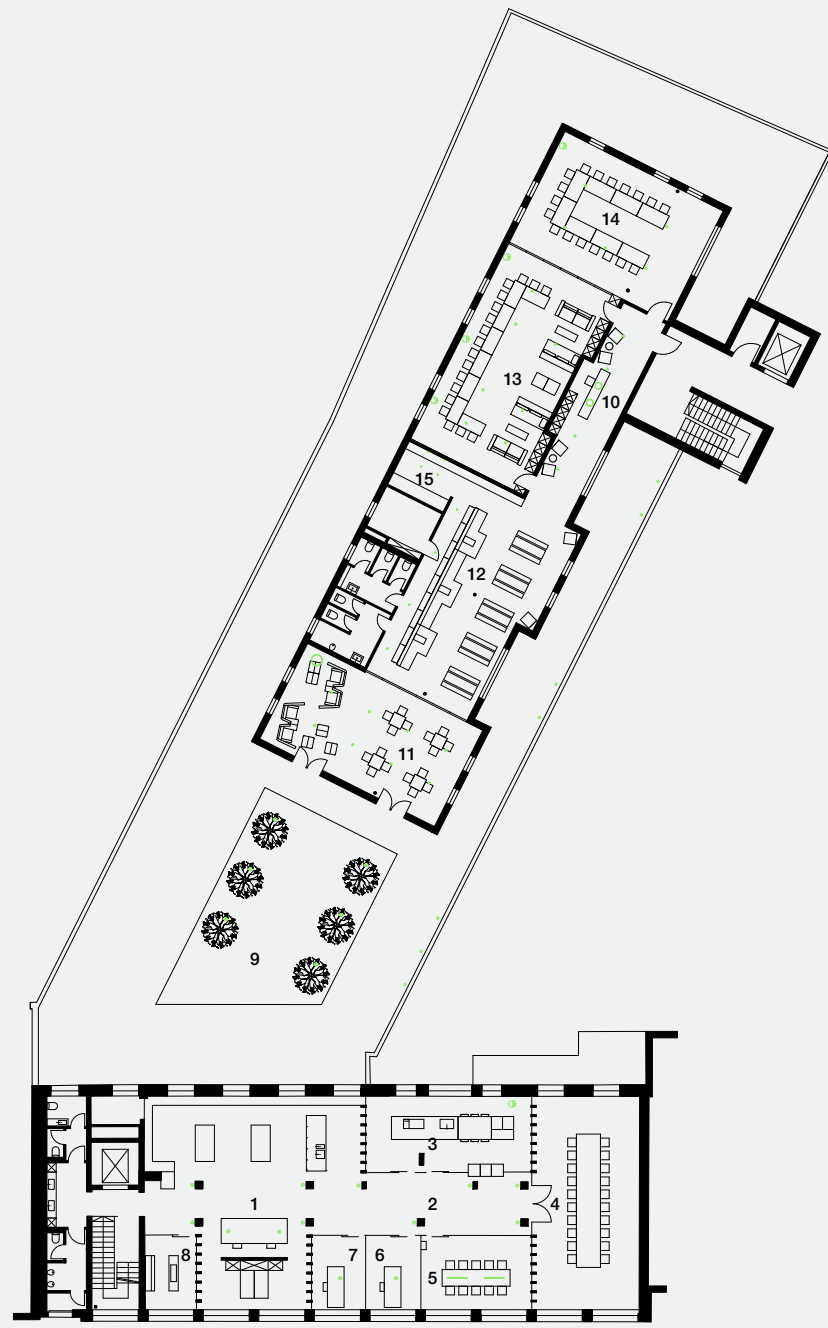
10 Outdoor area

- Sito palo

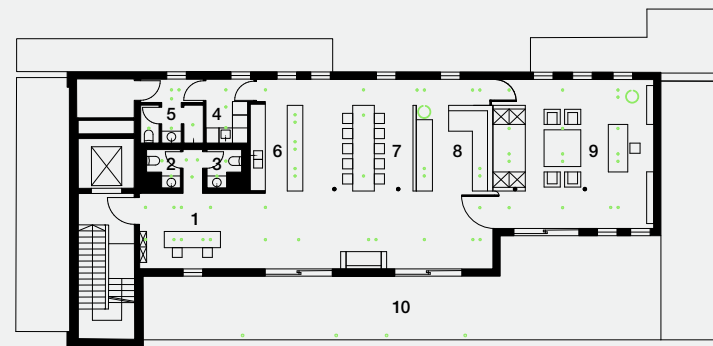
Light control system



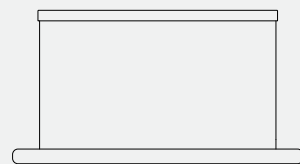
Occhio air



Second floor



Fifth floor



Mito volo 100



io tavolo



lui piano pure



»Having the right light,
 for the right moment is
 absolutely essential.«

Peter Martin

Watch our film about the project at
www.occhio.com/gabrielenlofts





Innovative architecture,
biodynamic light –
a visionary project

BORA Niederndorf (AT)

»Only by being open and curious, by challenging the way things are being done, can you make real progress.«

»Thinking outside the box is in our DNA.«

An interview with Willi Bruckbauer

BORA has grown swiftly since being established in 2007: the company that went into business with a workforce of one now has more than 350 employees, has earned many innovation awards and is a main sponsor in bicycle racing. An all-around success story. But things did not start out that way.

Willi Bruckbauer That's right. When I started out, I was laughed at by more than just the kitchen industry. I also couldn't find a partner with the financial resources I needed. Market research wasn't very encouraging either. But I stuck with it. I didn't apply the lessons you find in business textbooks. I came up with unusual ideas, including ones for marketing. And we became a powerful brand. I was convinced – and remain convinced – of one thing: only by being open and curious, by challenging the way things are being done, can you make real progress and achieve success. Thinking outside the box – this is built into our DNA at BORA. And I think that Occhio is that way, too. Axel Meise is also passionate about his ideas, philosophy and products – and Occhio also ventures off the beaten path. I like that. It describes BORA, too, and connects us.

Mr. Bruckbauer, how important is it to have the right atmosphere when you cook?

Willi Bruckbauer Very important! Light naturally plays a role in creating the right atmosphere. You also want to spend time in the kitchen with friends and have fun together. You want to have a warm, welcoming light for such occasions. You need bright light in the right place when you are preparing food and cooking. In terms of design and thinking, it should match our kitchen designs, as the look plays as much of a role as function. As a master carpenter, I developed a preference for high-quality materials and linear, simple and elegant design – qualities that I also see at Occhio. I should also point out that our BORA systems offer space and, thus, freedom for individual lighting design ideas. Unlike conventional cooker hoods, our concept does not interrupt your field of vision because our system is integrated directly into the cooktop. And Occhio is the perfect match for the design of our products as well.

Is this why you installed Occhio luminaires in your company headquarters?

Willi Bruckbauer Definitely. I want my employees to have first-class light for every working situation they face. We also place a high priority on active relaxation and healthy diets. We have exercise and relaxation rooms that have the same kind of mountain air you would find at an elevation of 2,000 meters. These are places where employees can go and recharge their batteries. I really want them to feel at home while at work and to remain active and healthy. The right light helps me do so.

Willi Bruckbauer
is the founder of and the creative force behind BORA, a company that produces groundbreaking integrated cooktop extractor systems. Melding technology and aesthetics on the very highest level – this is the philosophy of the master carpenter.



A stage for the art of cooking.



The mix of concrete, steel and rustic wood, combined with magnificent surfaces, is unusual – these are the type of deliberate contrasts that BORA loves. The show kitchen is perfectly accentuated by the interplay of Mito sospeso and lui spotlights. A lively, yet confident and calm lighting design.

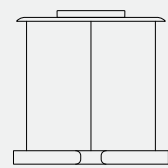
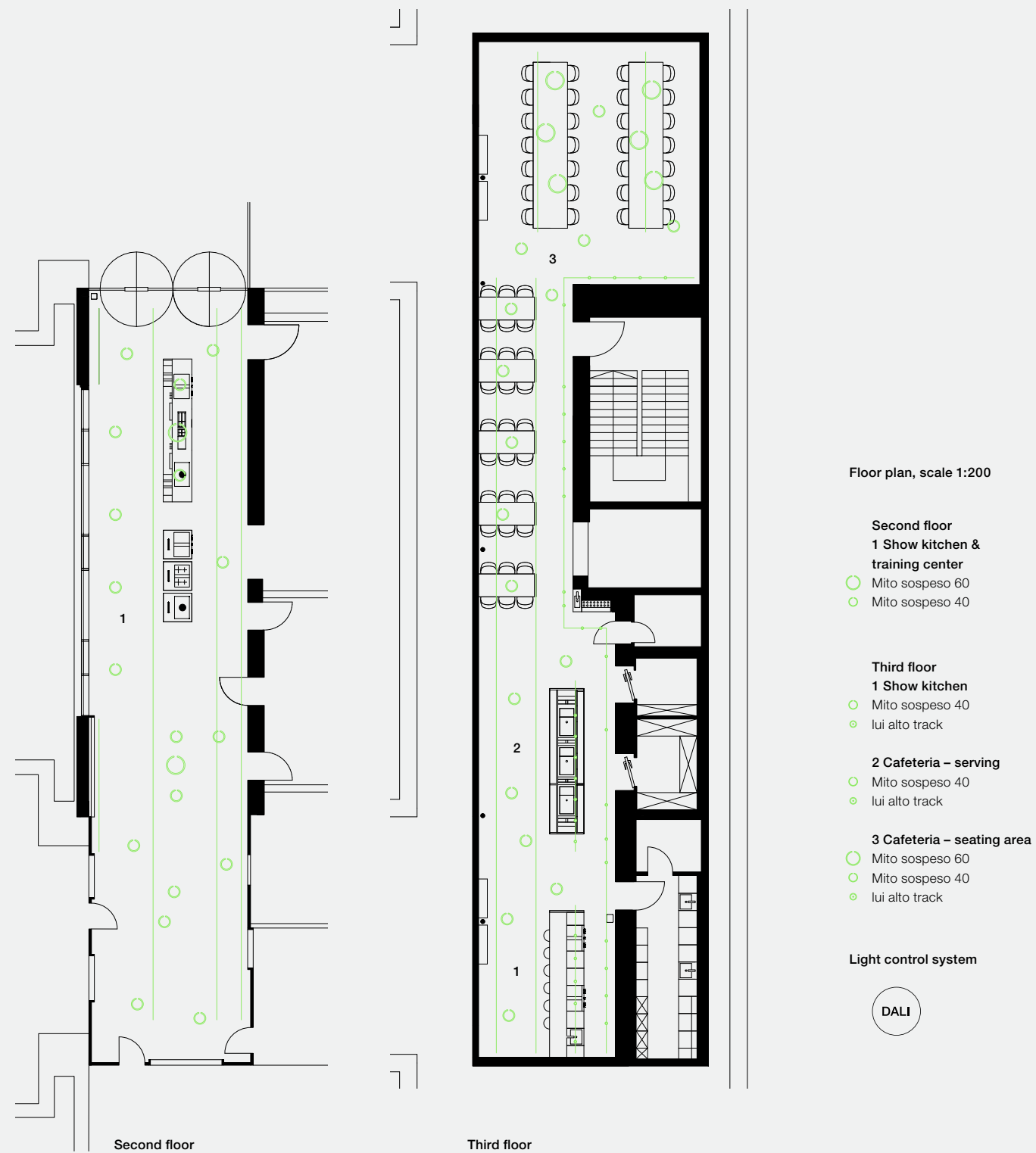
Recharging the batteries.



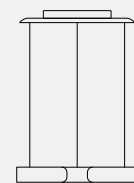
A spa at work? You bet! BORA employees can retreat into this inviting relaxation room to chill out when stress becomes too much. The biodynamic light control of the Mito sospeso via DALI is based on daylight: The color temperature continuously adjusts itself over the course of the day and always produces the right lighting conditions.

Facts

and figures



Mito sospeso 60



Mito sospeso 40



lui alto track



»We also place a high priority on active relaxation and healthy diets. I really want our employees to feel at home while at work.«

Willi Bruckbauer

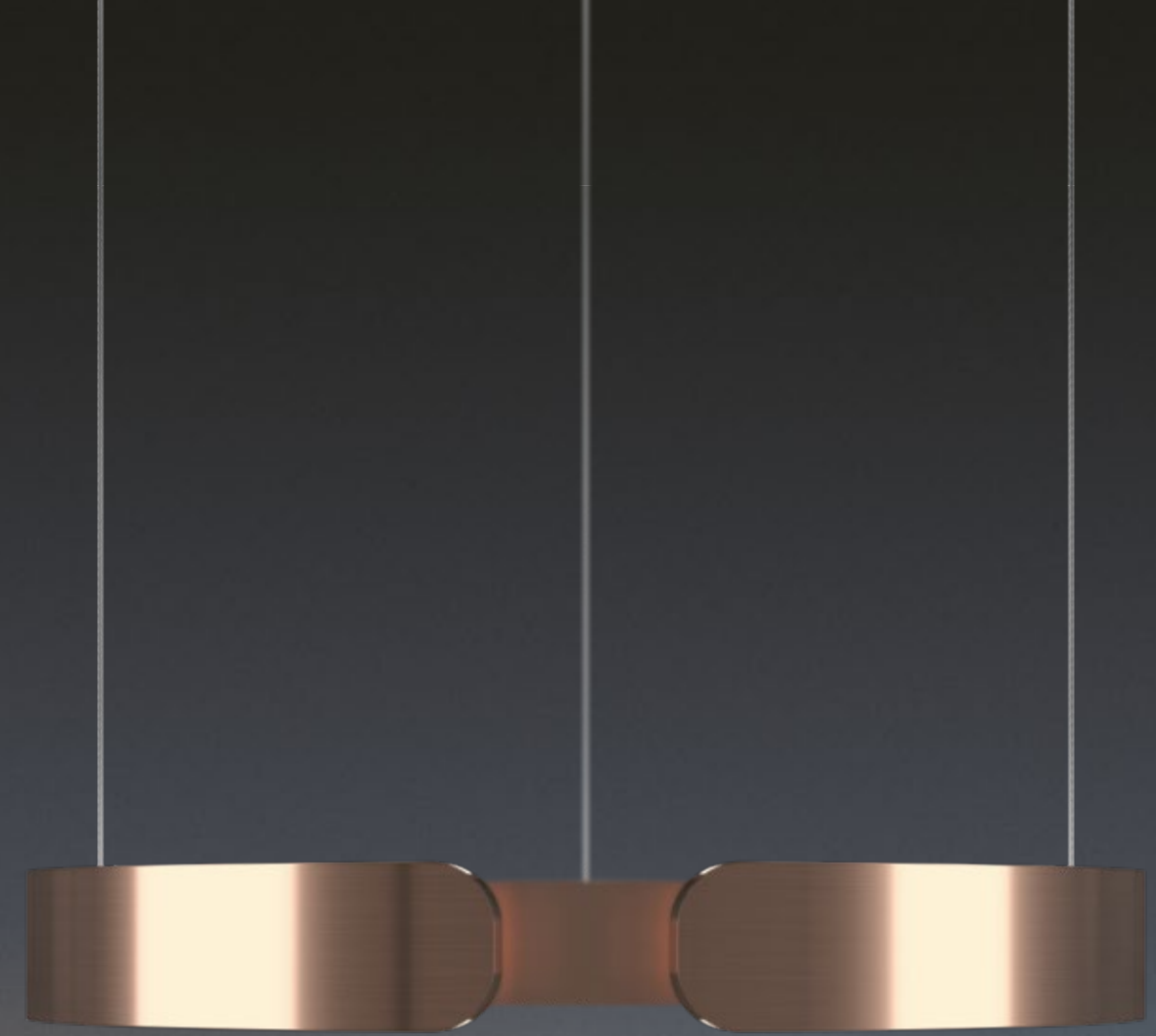
How Mito sospeso learned a new language.

State-of-the-art building engineering frequently uses control systems to transmit data. In turn, the light control is generally handled by the widely used DALI bus.

In this project, the customer, BORA, was looking for a human-centric lighting concept. The Electronics Department at Occhio devised a technical solution that can translate the commands of the DALI bus to the Occhio format.

Thanks to the new special configuration of the luminaires, they are now able to understand the incoming commands. As a result, it became possible to control the Mito sospeso by using the DALI bus standard for the first time – and to adjust the brightness, color temperature and the relationship between direct and indirect light.

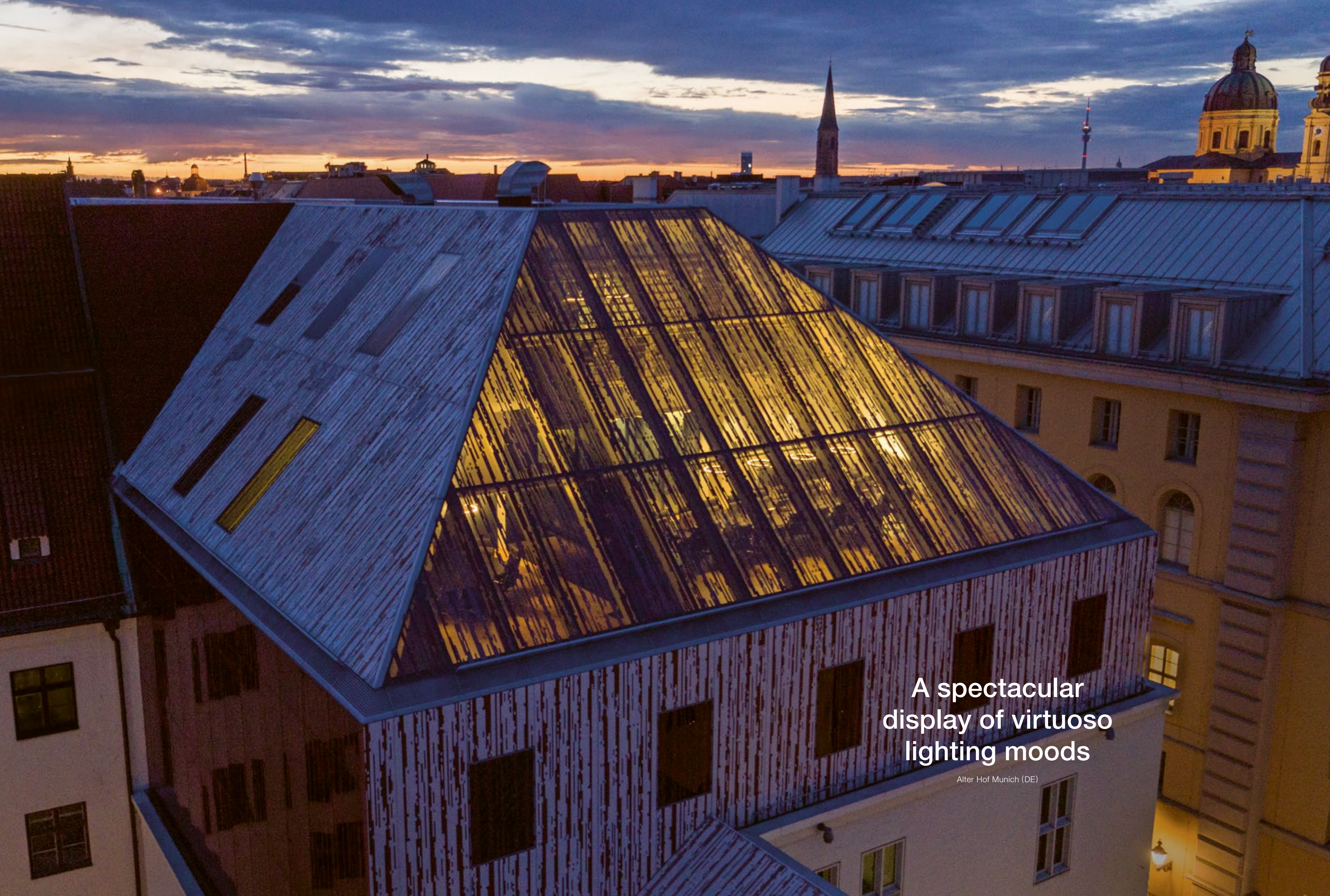
Mito sospeso learned a new language – and BORA's request for a human-centric lighting system became a reality.



color tune

In addition to brightness, the color temperature of the Mito luminaires is also regulated via DALI at BORA. The system biodynamically adjusts itself to the passing of the day – from warm lighting tones with 2700 Kelvin to cooler light with 4000 Kelvin.

2700 K ← → 4000 K



A spectacular
display of virtuoso
lighting moods

Alter Hof Munich (DE)

A portrait of Helen Neumann, a woman with dark hair, wearing a white button-down shirt and dark trousers. She is standing in front of a window with light-colored curtains. The lighting is soft and even.

»We have created a magical symbiosis between architecture and lighting.«

»The dynamic daylight flits through the room like a fairy. But we succeeded in capturing it.«

An interview with Helen Neumann

Ms. Neumann, as the Head of Lighting Design of Occhio, you helped design and carry out the remodeling project at the Alter Hof from the start. What made this project so special?

Helen Neumann The sublime, sophisticated architecture is brought to life by an extremely large number of façade openings. In the open office area, sloped glass panels provide amazing views of Munich as well. You can see the Cathedral Church of Our Lady and can observe the towers from amazing perspectives. The architecture is defined by these many beautiful glass areas. For the lighting design, this requires you to harmonize the daylight that is pouring in from everywhere with artificial light. The lively, high rooms have few reflective areas that you can use to direct the light back into the room. Daylight is dynamic, and in the Alter Hof it flits through the room like a fairy. Creating focused work light here proved to be an exciting challenge for us lighting designers. But we succeeded in capturing the fairy and creating a type of magical symbiosis between the architecture and lighting.

What approach did you take?

Helen Neumann We took an exciting journey together with the interior designers and the owners. We all moved forward with great care. And we had to abandon the standard in the process, such as with the mountings for our Mito sospeso suspended luminaires in the conference rooms. In this case, we turned to the glass slopes and mounted the luminaires with a specially made metal clip in such a way that they can still hang straight on the sloped areas. They look as though they're floating in the room. If, in the end, it looks as though someone simply tossed the luminaires into place, then the idea has worked perfectly – the lightness of appearance. It does not spoil the effect of the architecture in any way. Rather, it appears light and transparent thanks to the glass façades.

We each perceive light differently. What light-control options did you create in the Alter Hof?

Helen Neumann You can control the light with DALI or our Occhio air app. DALI sets the general lighting in accordance to a certain time cycle, on which the Occhio spotlights operate. We programmed a range of light scenarios after having detailed discussions in which employees here in the Alter Hof talked about their wishes and needs. Every workstation is of course equipped with its own individual light solution. We used our Mito terra 3d floor luminaire here. It is disconnected from the DALI system and can be operated individually with Occhio air or gesture control. The Mito sospeso luminaires in the conference rooms are also controlled with Occhio air.

High. Light.

The Alter Hof was an unusually challenging project to design. From the second visitors enter the reception area, they are dazzled by the towering, open rooms – the gracefully floating Mito sospeso cloud enhances the airy and inviting nature of the site. The canopies of the luminaires are mounted on grids with a specially made substructure and bring harmony to the disorder caused by the shifting daylight.





Best perceptions, best prospects: The desks in this office of the Alter Hof are illuminated by Mito terra 3d, which can be individually set and are ideal for focused work. The huge windows provide magnificent views of downtown Munich, including of the Cathedral Church of Our Lady.

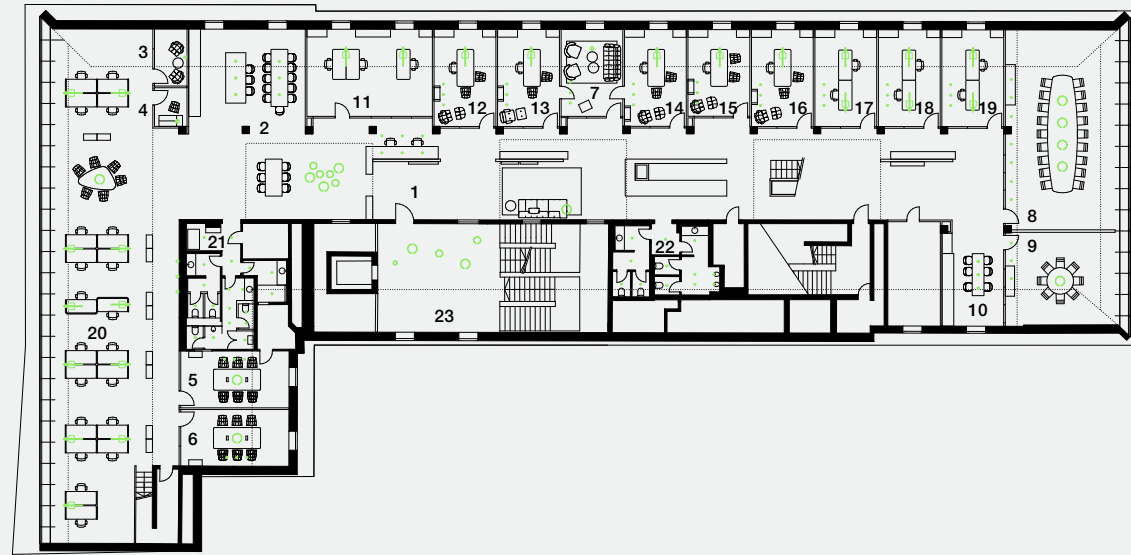




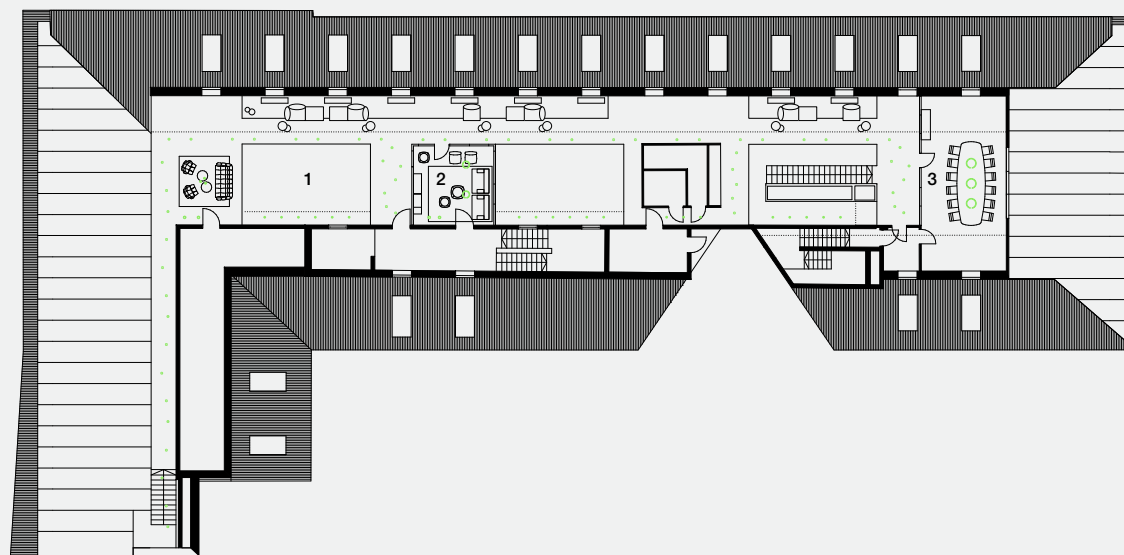
Facts

and figures

Floor plan, scale 1:450



Fourth floor



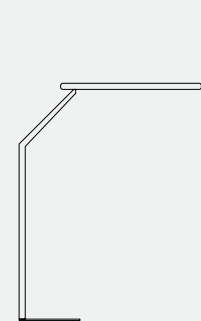
Fifth floor

- Fourth floor**
- 1 Reception area**
 - Mito sospeso 60
 - Mito sospeso 40
 - Mito raggio
 - io piano
- 2-10 Conference rooms**
 - Mito sospeso 60
 - Sento verticale
 - Più piano
 - lui piano
- 11 Executive office**
 - Mito terra 3d
- 12-19 Individual offices**
 - Mito terra 3d
 - lui piano
- 20 Workstations**
 - Mito largo
 - Mito terra 3d
 - Sento verticale
- 21-22 Restrooms**
 - lui piano
- 23 Staircase**
 - Mito soffitto 60
 - Mito soffitto 40
 - Mito soffitto 20
- Fifth floor**
- 1 Lounge area**
 - Sento sospeso
 - io piano
 - lui alto
- 2-3 Conference rooms**
 - Mito sospeso 60
 - Mito soffitto 40
 - lui piano

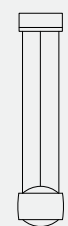
Lighting control system



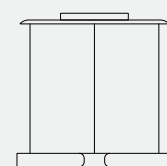
Occhio air



Mito terra 3d



Sento sospeso



Mito sospeso 60



io piano



A lounge area in the gallery on the top floor of the Alter Hof is an inviting place to take a break. The height-adjustable suspended luminaires Sento sospeso create the soothing light mood needed for such times.



MISAN

Nordic clarity
and hospitality

Hotel Misan Norderney (DE)



Outside, the storm is raging.



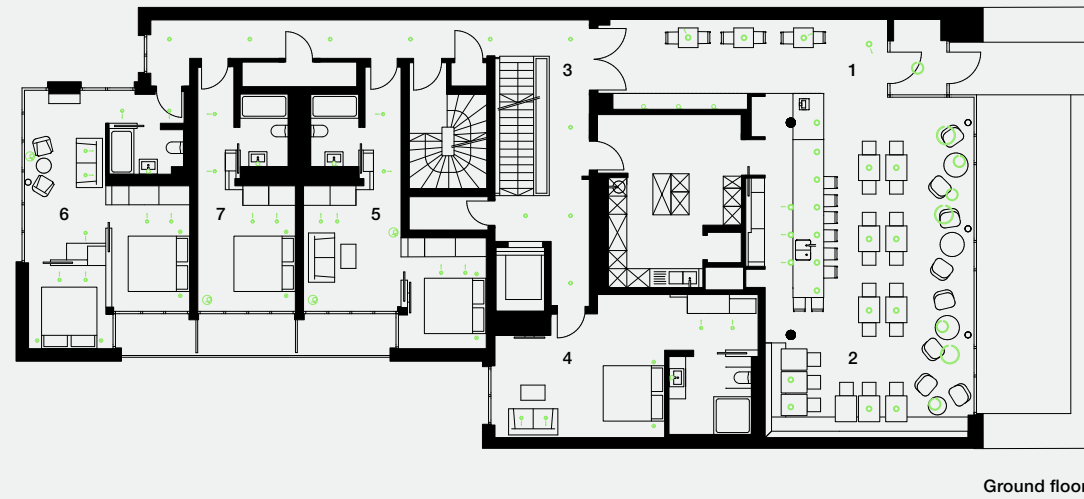
The mild and soft natural tones and materials at Hotel Misan meld the color nuances of Norderney's sandy beaches with the architecture in the spacious lobby, bar area and restaurant. Minimalistic design and islands of light over the tables and the bar create an intimate and cozy evening mood – particularly when the wind is whipping the North Sea in fall and winter.





Facts

and figures



Plan floor, scale 1:250

Ground floor

1 Reception area

- Mito soffitto
- Più piano

2 Restaurant & bar

- Mito sospeso 60
- Mito sospeso 40
- Più piano

3 Corridor

- Più alto
- Sento verticale

4-6 Suites

- Sento sospeso
- Sento verticale
- Sento lettura 125
- lui volto

7 Double room

- Sento sospeso
- Sento verticale
- Sento lettura 125
- lui volto

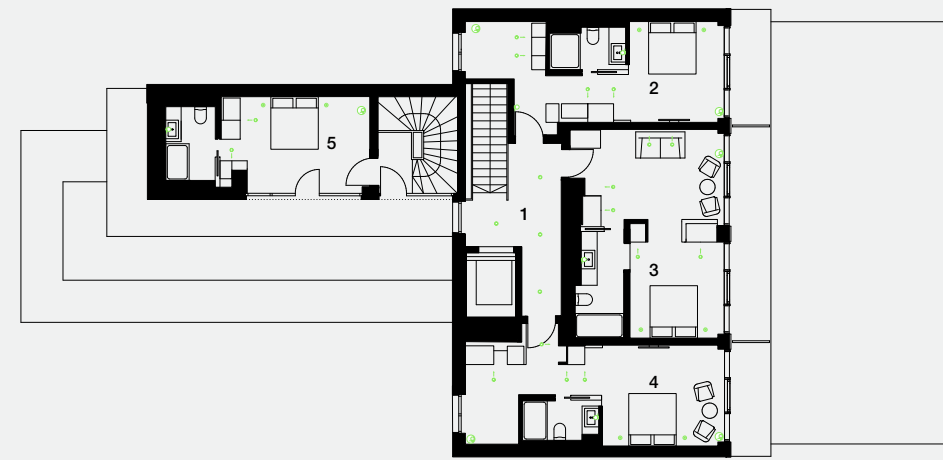
Third floor

1 Corridor

- Più alto

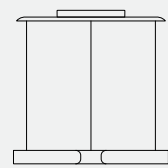
2-5 Suites

- Sento sospeso
- Sento verticale
- Sento lettura 125
- lui volto



Third floor

Lighting control system



Mito sospeso 60



Sento lettura 125



lui volto

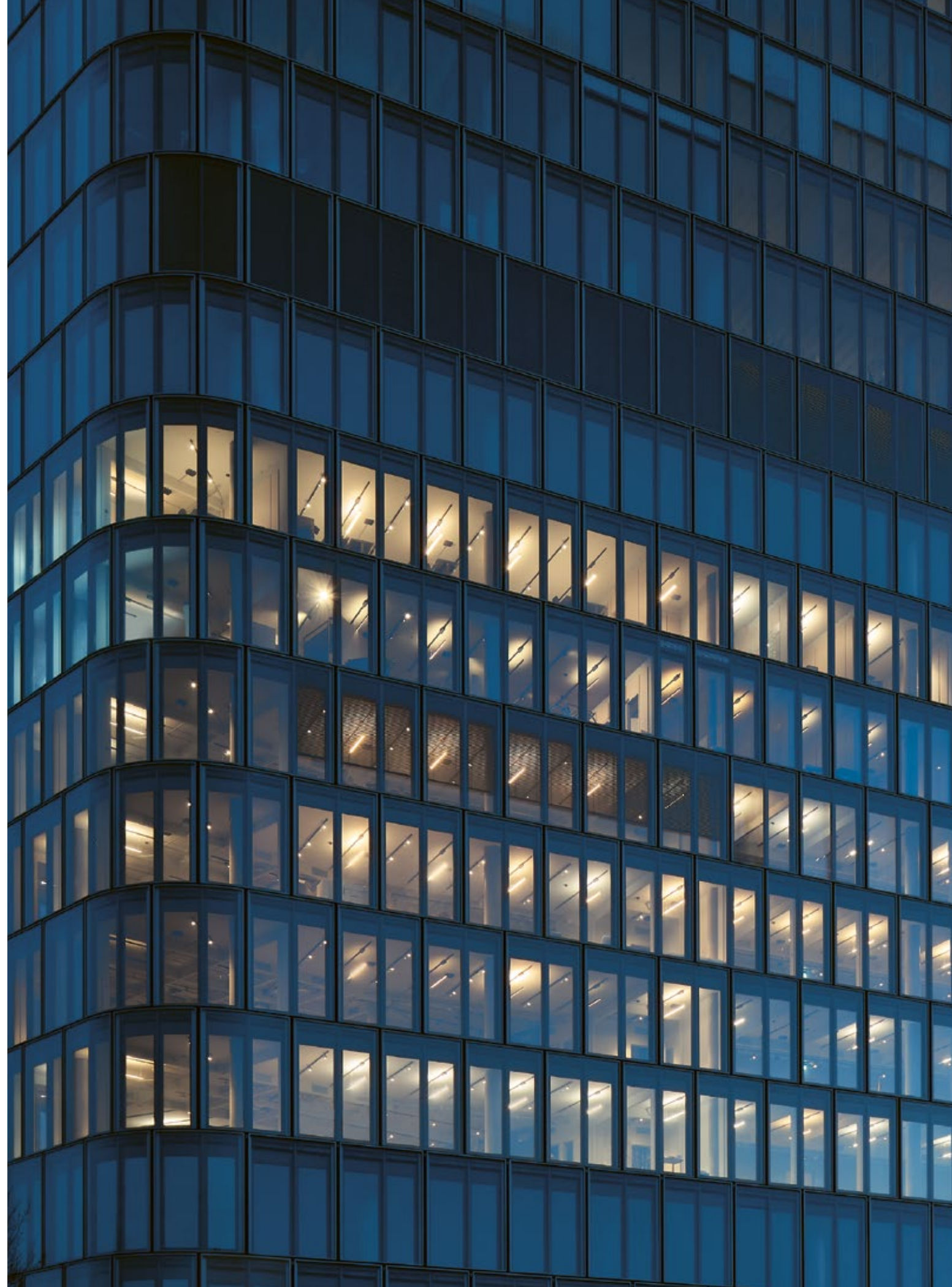


The sea eternally beckons – in rooms with views of the sea, the interior should not compete with the view itself. The lighting joins in the fascinating interplay of golden light in front of the window in a very pleasant way. The luminaire design and the quality of light harmoniously interlink all zones of the room.



The lighthouse

Design Offices Munich (DE)



That feeling of being welcome.

That's the sense you get the moment you set foot in the open, modern working world of a new generation found in the Bavaria Towers in Munich. In the highest of the four towers, Design Offices offer seven floors and 9,000 square meters of high quality work space – and luminaires from Occhio take the quality of lighting to a whole new level.



Versatility has never looked so good: The Design Offices in Munich combine the highest levels of variability with the very best quality of design and light. Using an intelligent track system that harmonizes with the trapezoid-shaped floor plan of the building, it was possible to realize ambitious yet flexible lighting solutions for all areas – and all within a tight budget.

In addition to the acoustic effect of the Mito soffitto acoustic (left), its suspended panels offer an additional reflective surface for light and open up entirely new possibilities for ceiling design.

Favorite spot.



The right atmosphere for everyone: Thanks to »color tune« the color of the light can be adapted dynamically to the rhythm of daylight – and can be controlled across all floors using Occhio air. Users come into play as designers, able to use gesture control or Occhio air to make individual adjustments to the overall atmosphere and personalize the situation.

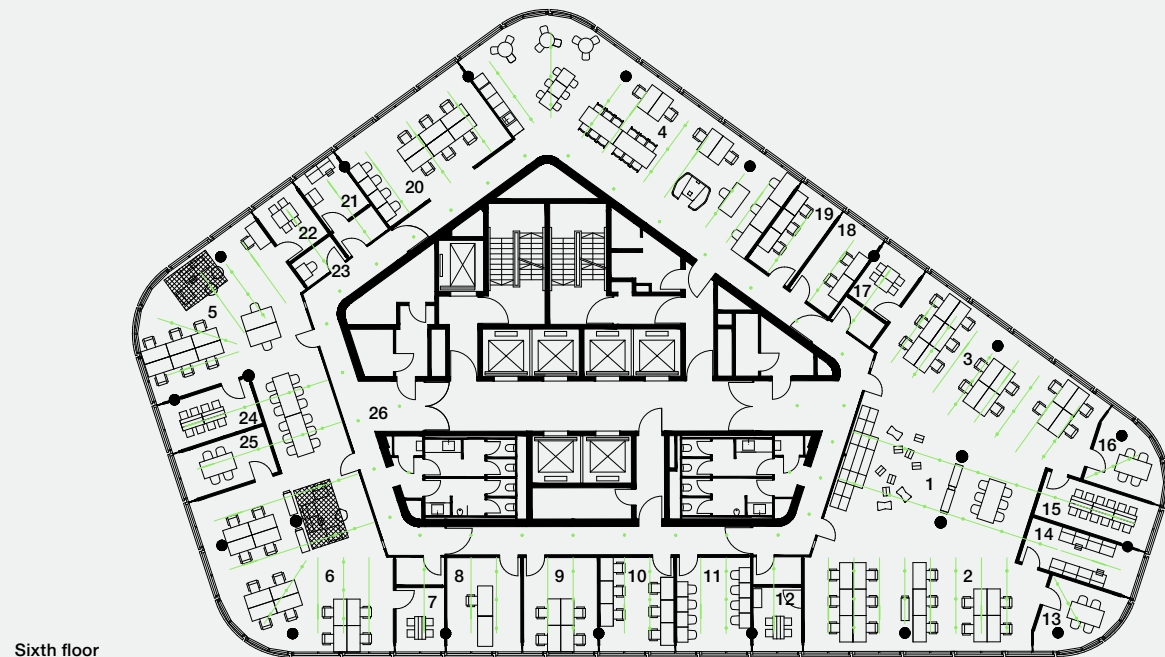
Facts

and figures

Floor plan, scale 1:400



Second floor



Sixth floor

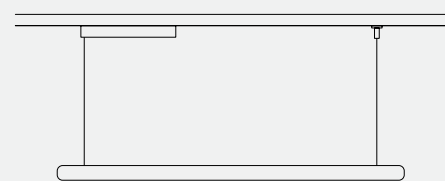
- Second floor**
- 1 Reception area**
- Mito sospeso 60
 - Più R alto 3d
 - ◇ Più R alto 3d track
- 2 Event area**
- Mito sospeso 60
 - Mito sospeso 40
 - Mito raggio
 - ◇ Più R alto 3d track
- 3-5 Open office space**
- Mito sospeso 60
 - Mito sospeso 40
 - Mito raggio
 - ◇ Più R alto 3d
 - ◇ Più R alto 3d track
- 6-11 Flexible office space**
- Mito sospeso 60
 - Mito sospeso 40
 - Mito soffitto 60 acoustic
 - Mito soffitto 40 acoustic
 - Mito volo 140 track
 - Mito volo 100 track
 - ◇ Più R alto 3d track
- 12-14 Closed office space**
- Mito sospeso 40
 - Mito volo 140 track
 - ◇ Più R alto 3d track

- Sixth floor**
- 1 Lounge area**
- ◇ Più R alto 3d track
- 2-6 Open office space**
- Mito volo 140 track
 - ◇ Più R alto 3d track
- 7-25 Closed office space**
- Mito volo 140 track
 - ◇ Più R alto 3d track
- 26 Corridor**
- ◇ Più R alto 3d

Lighting control system



Occhio air



Mito volo 140 track



Mito soffitto 60 acoustic



Più R alto 3d track

Come. Together.



Mito sospeso illuminate this event area of the Design Offices. The suspended luminaires are set at different heights and arranged loosely to radiate a particular sense of lightness. This creates the right lighting mood for any occasion.



**Intelligent light control
for a smart office**

Novalink Frauenfeld (CH)

A portrait of Anton Biersack, Chief Technology Officer at Occhio. He is a middle-aged man with grey hair, wearing a dark blue button-down shirt and dark trousers. He is standing with his arms crossed against a plain white wall.

»I'm like a kind of technology scout, constantly on the lookout for new developments and ideas.«

»With the order from Novalink we were able to really demonstrate our ability to innovate.«

Interview with Anton Biersack

Mr. Biersack, you are the Chief Technology Officer at Occhio, how would you explain to a non-specialist what it is you do?

Anton Biersack Firstly we develop the electronics in the luminaires and the software for everything to do with light control. These are all the features with which light can be controlled. Warm or cool, bright or dark, upward or downward. We also cooperate closely with our manufacturers to ensure that everything runs optimally, from the idea up to the realization. And my job also involves being constantly on the lookout for new developments and ideas, like a kind of technology scout.

Like with the order for Swiss company Novalink?

Anton Biersack Exactly. For this order we illuminated the office rooms in a modern, round building in a completely new way. The customer develops alarm and security systems and was therefore very tech-savvy and had precise ideas: The entire lighting system was to be controlled automatically using motion sensors in the ceiling, walls and luminaires. The goal was to create a uniform lighting atmosphere that still enabled a certain amount of flexibility at the workstation.

Would you say it was an order in which you pushed the limits of what was technically possible?

Anton Biersack (laughs) The order certainly spurred on our ambition, but we were able to really demonstrate our ability to innovate. We soon realized that we wouldn't be able to implement the customer's wishes with our standard luminaires from the Mito linear series at the time. As a result, we developed a new software and modified the control functions and sensors in the luminaires – of course, without changing the design. Only with a combination of motion sensors in the room and in the luminaires were we able to ensure the desired result: a control system based on daylight that changed the color temperature depending on the time of day and weather, and automatically turned the luminaires on or off depending on whether or not there was anyone there. It is controlled by our Bluetooth-based light control system Occhio air which is also available as an app.

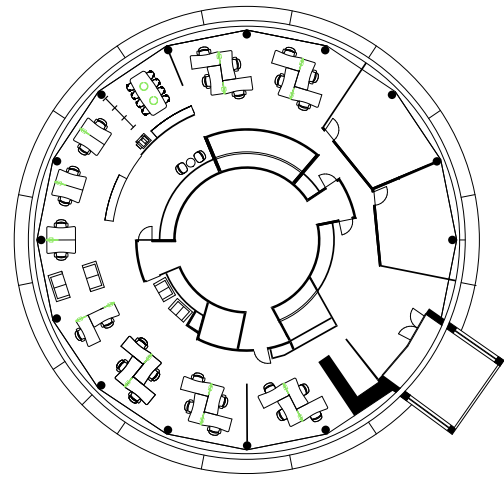
In future, you plan to pool together control options specially for the project area with Occhio air plus.

What exactly can lighting designers, developers and architects expect from this?

Anton Biersack We offer professionals entirely new possibilities when it comes to light control: As of now, luminaires can be controlled simultaneously, for example – using our light control system Occhio air, without the need for a cable. It is also possible to automate the control of luminaires using sensors, as we did for Novalink. DALI gateways enable the option to integrate all luminaires directly into the building services. And for those who wish to use the Occhio air network »remotely« and not just within range of their phone, we have created new solutions for this, too. I look forward to seeing what kind of projects will be realized with Occhio air plus in the near future. And I am very excited about the new possibilities we are providing for architects and designers, enabling them to control the light in their projects in a state-of-the-art way.

Occhio air plus – external sensor

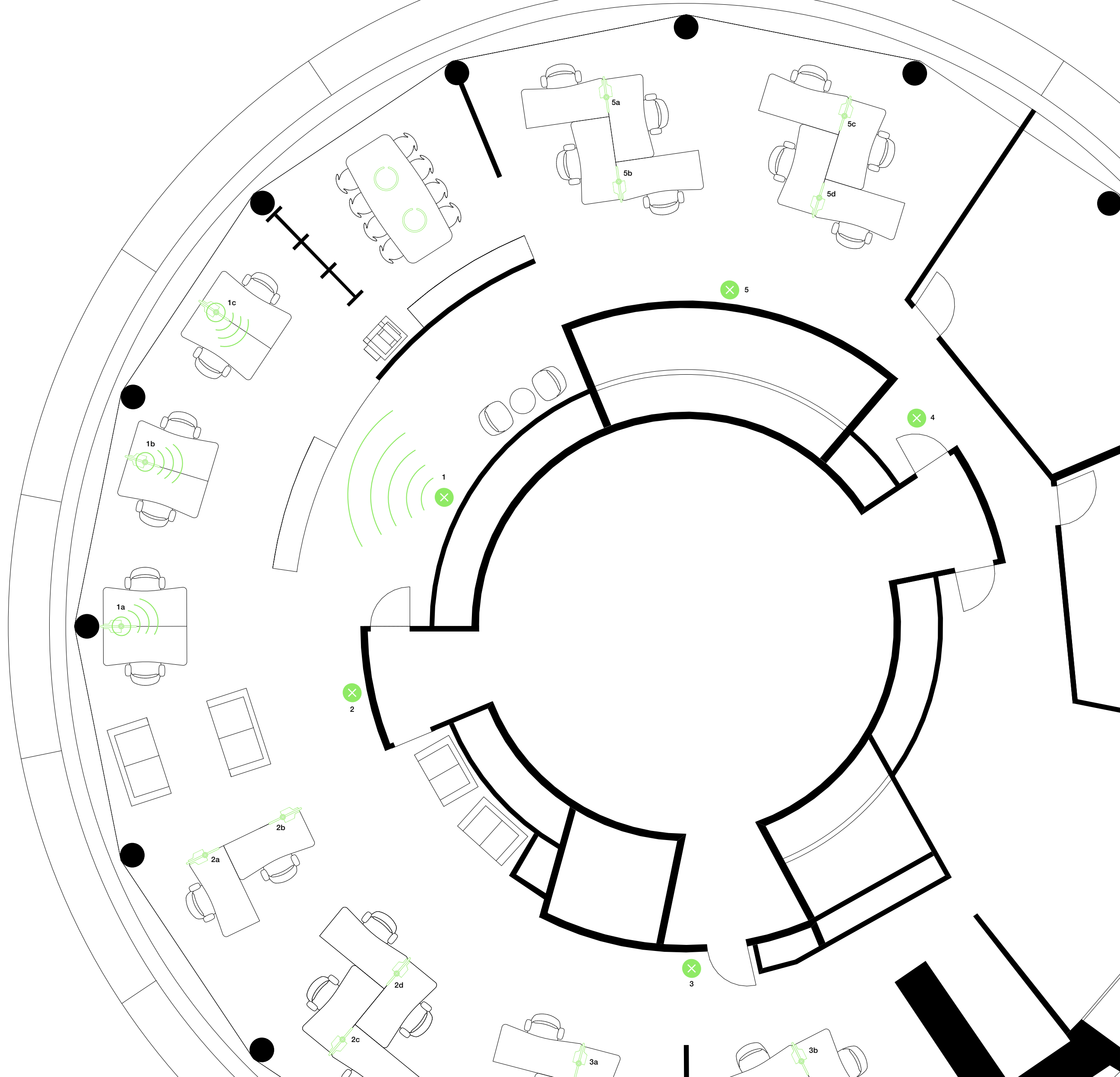
Occhio air plus offers professionals new possibilities for controlling light in their projects: at Novalink, sensors allow for the automated control of luminaires. The color temperature and intensity changes automatically over the course of the day depending on the time of day and ambient brightness. The luminaires are turned on and off using motion detection sensors. Sensors and luminaires communicate with each other via Occhio air.



1 Motion sensors
interacting with luminaires 1a–1c Mito terra

2–5 Motion sensors
control luminaires 2a–5d as above

Learn more about our control options
for the project area at
www.occhio.com/occhioairplus



Concentrated.



In Novalink's smart office, biodynamic lighting design is coupled with motion sensors. For Occhio, this meant a technological challenge first during the design phase, which was solved together with the customer. The Mito terra floor luminaires change their color temperature depending on the time of day and weather. At most, 4000K, a »normal white«, prevails in the office, which offers maximum concentration to the employees.

Relaxed.



The same office, except in this case the luminaires emit a color temperature of 2700 K, a »warm white«. Here we see a much more relaxing atmosphere. The inviting light is perfectly suited to starting the new day in the office feeling good, or rounding off the day's work in the late afternoon.



New luster in golden Prague



Anyone walking along the banks of the Vltava in Prague today will soon be drawn to a lively surroundings of cafes, clubs, studios and workshops. Where once 20 ancient ice storage vaults were closed, the heart of the city beats today. Architect Petr Janda masterminded this spectacular revitalization.

»We wanted to create a contrast between the original, completely closed vaults and the newly acquired, fully open state,« explains Janda. The cross section of the vault cladding was added to a circular shape with an elliptical pivot window, altering the overall perception. The work with light became part of the day and night strategy.

»We were looking for a method that kept the design as natural as possible. We decided on the Sento luminaires from Occhio because they add to the visuality of the entrance portal in a natural way and evoke the impression of a fractal relationship between the heads of the luminaires and the window. The strengths of Sento are its uncompromising design, the modularity of individual adaptations and the adjustability of the light intensity.«



a new culture of light

Quality of design



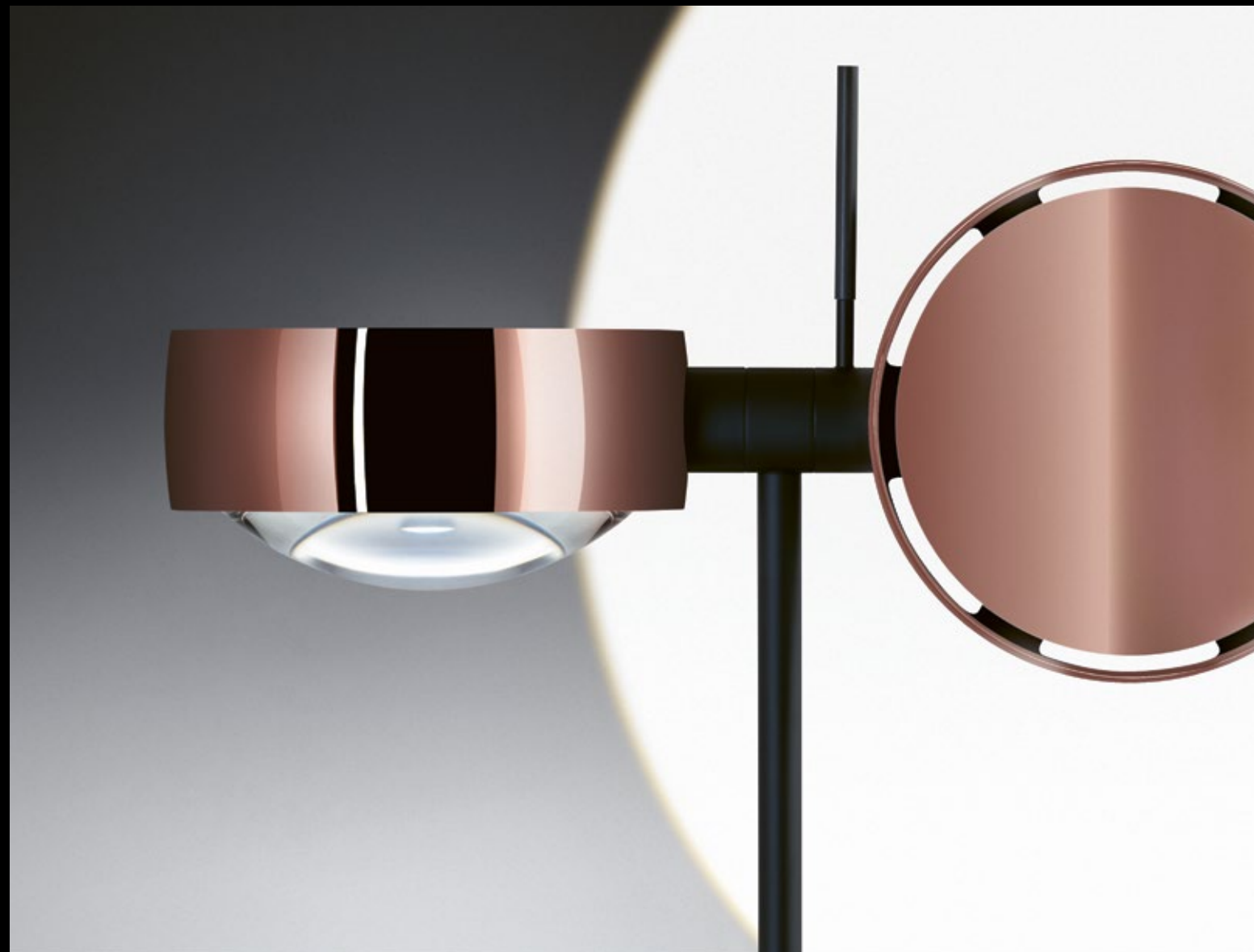
phantom – the fascinating new surface



Design and function go hand in hand at Occhio – a symbiosis that transforms quality into an experience! Premium materials and meticulous workmanship with lots of attention to detail lend a perfect aesthetic that's also sustainable. Thanks to Occhio's holistic concept, rooms or even entire buildings can be uniformly designed – all with the highest levels of design quality.

Quality of light

We use light to create living spaces, moods and atmospheres. Precise, selectable optics provide unique design possibilities – all with the highest quality of light: A color rendering index (CRI) of 95 and above guarantees the best lighting conditions.

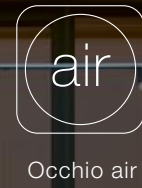


Color rendering

The perceived quality of light is determined by the quality of rendering of the visible spectrum of light. The measuring unit is the so-called color rendering index (CRI). As a reference, natural sunlight has a CRI of 100. Occhio »high color« and »perfect color« LEDs come very close to this ideal with a CRI of 95 or 97, producing the best possible color rendering.

CRI
95

CRI
97



Luminaire

Scene

Group

Setting the stage using light

Occhio takes design possibilities with light to a whole new level: With Occhio air, light can easily be controlled, in individual rooms, houses or entire buildings. As individual luminaires or all at once. On site or remotely. Personally or automatically. Smart light control reacts flexibly. Occhio luminaires are also optionally available in DALI-compatible versions.



up/down fading



dimming



color tune



DALI



presence sensor



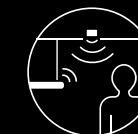
Occhio air



sync



remote



external sensor

Holistic lighting design

Whether designing individual situations and rooms or illuminating entire buildings: Holistic lighting solutions from Occhio offer unprecedented possibilities for lighting design – for all areas of life. The innovative system architecture provides consistent quality of light and design and, thanks to its well thought out connectivity, offers a unique 'joy of use'.





Living



Hospitality



Living



Office



Living



Office



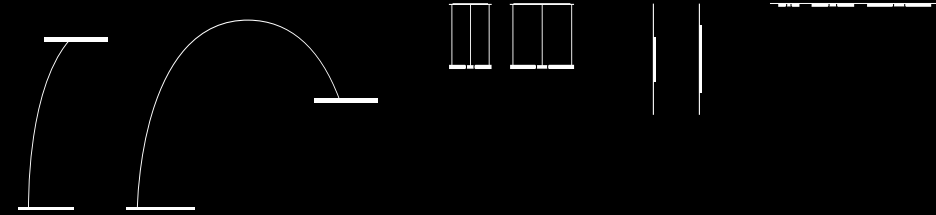
Living



Shop



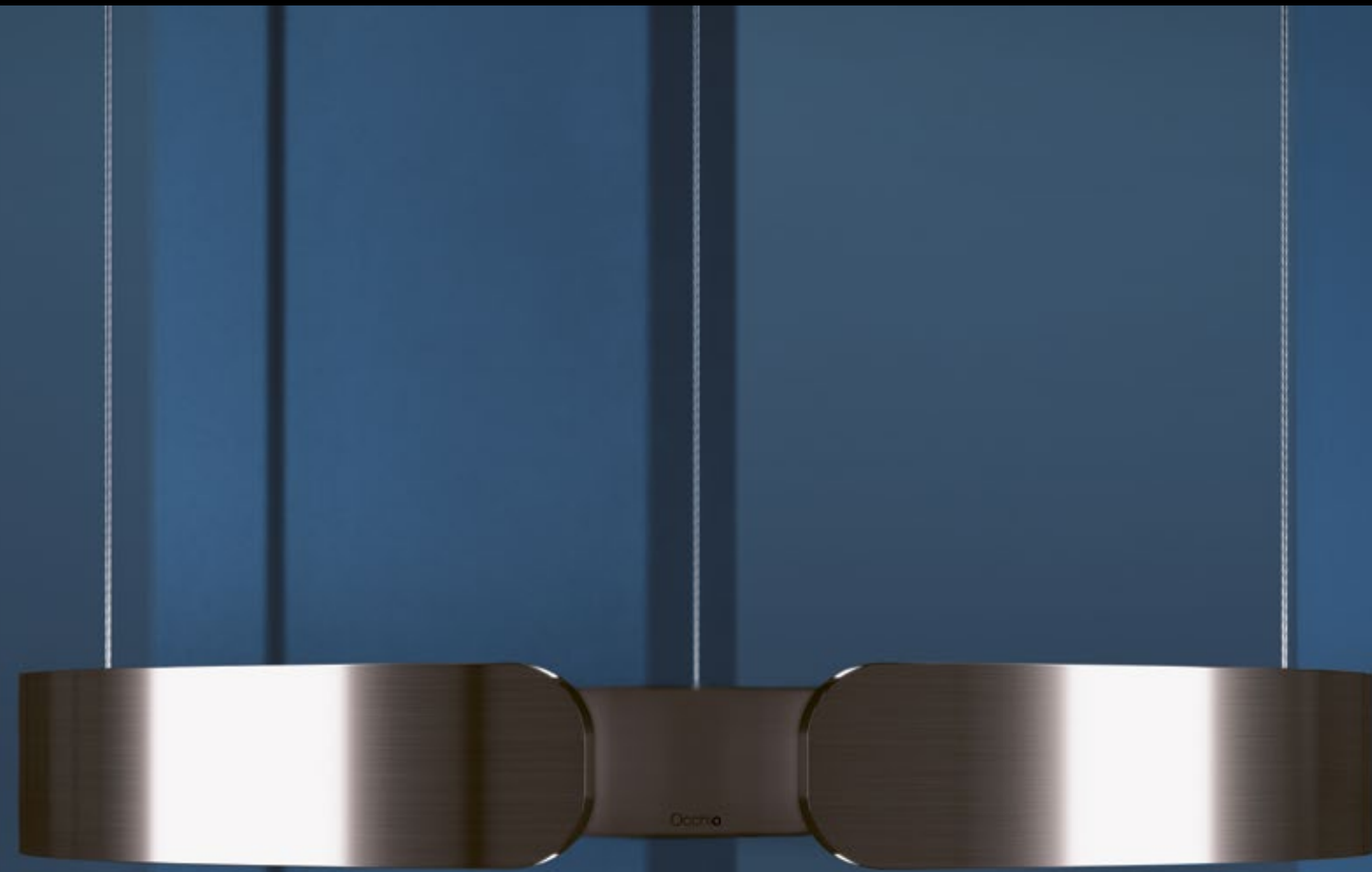
Mito



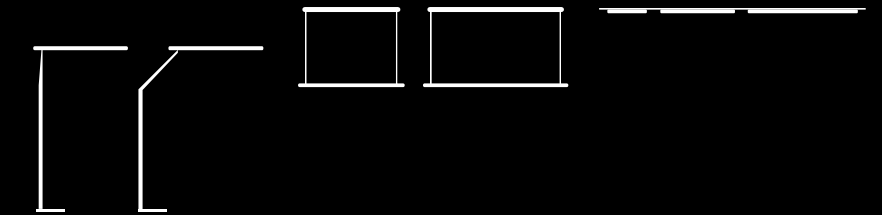
The myth of light – Mito combines iconic design, fascinating quality of light and innovative possibilities to interact with light into one, comprehensive system – creating entirely new ways to experience light.

Features

color tune | up/down fading | touchless control | Occhio air (optional) | height adjustment (optional for suspended luminaires) | CRI 95 | selectable optics



Mito linear



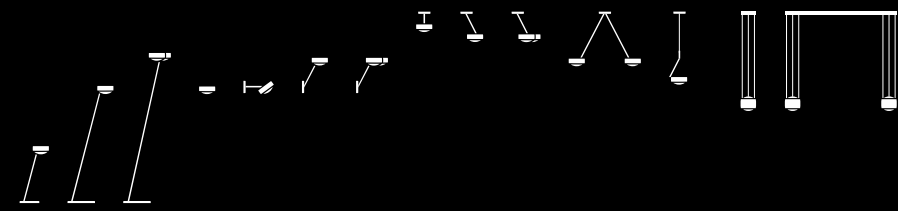
The new shape of light – puristic design, revolutionary lighting technology and innovative control options: Mito linear opens up new forms of lighting design.

Features

color tune | up/down fading | touchless control | Occhio air (optional) | height adjustment (optional for suspended luminaires) | CRI 95 | selectable lens options



Sento



Sento

Sento sospeso

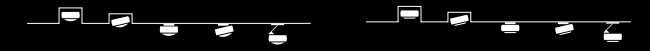
Design meets innovation – Sento combines timeless design, the highest level of variability and unique quality of light into one modular, innovative system for holistic lighting design.

Features

lens optics | selectable lighting effects | comprehensive system architecture | up/down fading | touchless control | Occhio air (optional) | CRI 97 | height adjustment (optional for suspended luminaires)



Più



Più

Più R

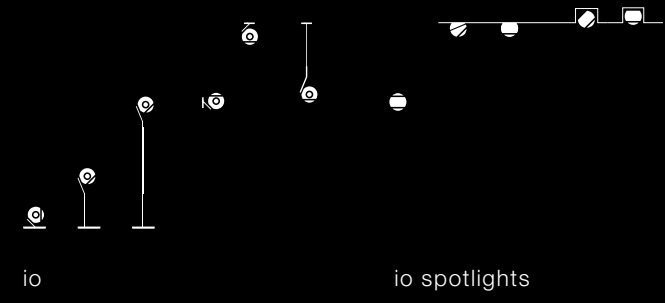
Perfect purism – as a system of surface-mounted, recessed and track spotlights whose every detail has carefully thought out, Più also offers the perfect lighting solution for any situation thanks to a wide array of lens optics. Here, the innovative Occhio VOLT technology enables an unprecedented level of freedom of placement.

Features

lens optics | selectable lighting effects | Occhio air (optional) | CRI 97 | selectable color temperature | cc (constant current) or VOLT technology (plug & play)



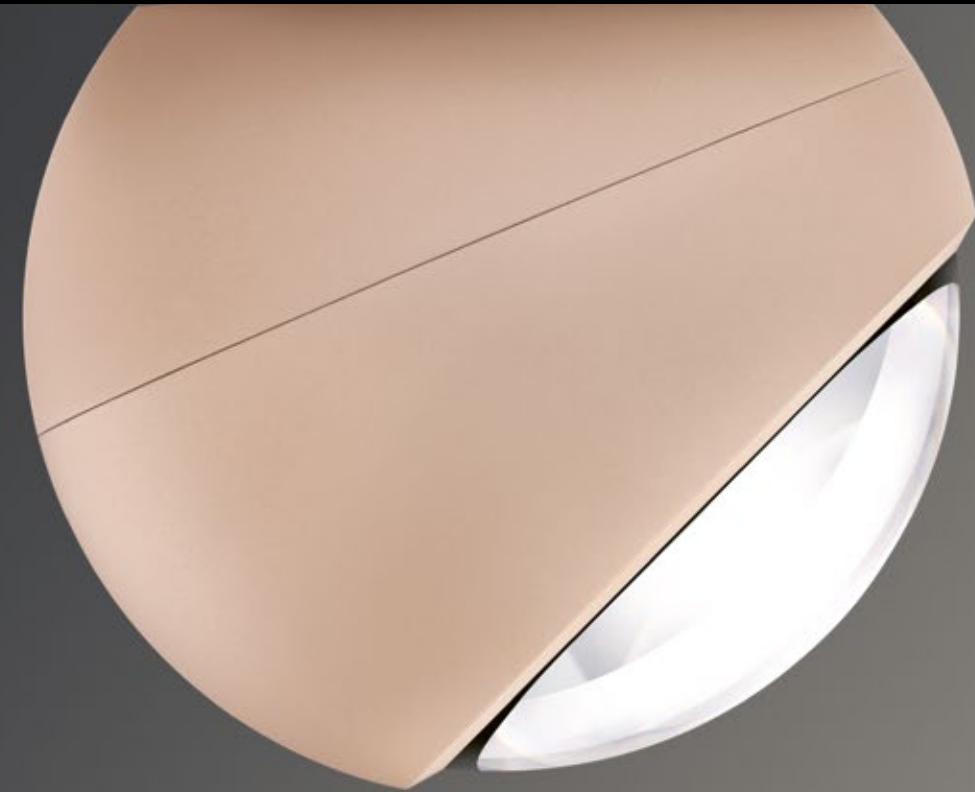
io



Pure geometry – minimalistic design, glare-free lens optics and magical flexibility combined with innovative technology provide entirely new possibilities for interacting with light.

Features

lens optics | selectable lighting effects | Occhio air (optional) | CRI 97 | selectable color temperature | cc (constant current) or VOLT technology (plug & play)



lui



Radically different – Zoom, interchangeable optics, three-dimensional movability: Lighting technology and design become one within a comprehensive system for precise lighting design.

Features

selectable lenses | Zoom or lens optics | Occhio air (optional) | CRI 97 | selectable color temperature | cc (constant current) or VOLT technology (plug & play)



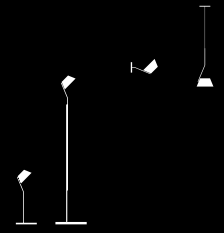
M Series

lei

Introverted or extroverted – the very first shade luminaire with variable radiance thanks to an adjustable iris shutter for direct or atmospheric light.

Features

lens optics | adjustable iris shutter | touch control (de-activatable) | CRI 97



E Series

Sito

Perfect light. Outside. With Sito, the highest design standards and Occhio's exceptional quality of light are transferred to the outdoors – as a comprehensive system for holistic lighting design in outside areas.

Features

lens optics | selectable lighting effects | dust-tight and jet-proof | Occhio air (optional) | CRI 97 | VOLT technology (plug & play)



phantom*

rose gold* (Sento, Più, io, lui, lei)

rose gold* (Mito)

bronze*

matt gold

Surfaces

live your style

matt silver (Mito)

matt black

glossy white (Sento, Più, io, lei)

matt white

matt chrome (Sento, Più, io, lui, lei)

shiny chrome (Sento, Più, io, lui, lei)

For details about surfaces and configurations, please see www.occhio.com
*PVD surfaces that are manufactured in a complex metalization process

The plus for pros: make use of the full potential of holistic lighting design!

Occhio+ expands Occhio's product portfolio for the project area:

- + **Occhio pro** offers versions with maximized luminous intensity and free connection options for building controls – all the while optimizing costs.
- + **Occhio pure** spotlights and luminaire versions can be integrated into the building via mounting boards – to meet the highest aesthetic demands.
- + **Occhio acoustic** combines Occhio's characteristic quality of light and design with acoustically effective elements to create a new synthesis with the building and interior design.
- + **Occhio air plus** adds cutting-edge features for private and public projects to the innovative Occhio air Bluetooth control system.

Find out more about Occhio+
www.occhio.com/occhioplus



Editor

Occhio GmbH
Wiener Platz 7
81667 Munich
Tel +49 89 44 77 86 30
Fax +49 89 44 77 86 39
info@occhio.com

Represented by:
Managing Director Axel Meise
and Dr. Benno Zerlin
Register entry:
County Court Munich, HRB 133172
VAT identification number: GER 813 013 462

Product design

Axel Meise
Co-designer: Christoph Kügler

Concept / Design / Post-Production

Martin et Karczinski
www.martinetkarczinski.de

Editorial team

Looping Group
www.looping.group

Renderings

Chris Faber
Sunday digital, www.sunday.digital

Photos

Mierswa & Kluska, www.mierswa-kluska.de
Robert Sprang, www.rs fotografie.de
Christoph Philadelphia,
www.christoph-philadelphia.com
Regina Recht, www.reginarecht.com
BoysPlayNice Photography & Concept,
www.boysplaynice.com
Oliver Jaist, www.oliverjaist.com

Print

Druckerei Vogl GmbH & Co KG
Georg-Wimmer-Ring 9, 85604 Zorneding
www.druckerei-vogl.de

English

2021 | 02 – first edition
Subject to errors and technical changes.

Occhio

Occhio

MARTIN ET KARCZYNSKI

a new culture of light

Case Book
Commercial Projects
English
2021 | 02

Case Book | Commercial Projects